

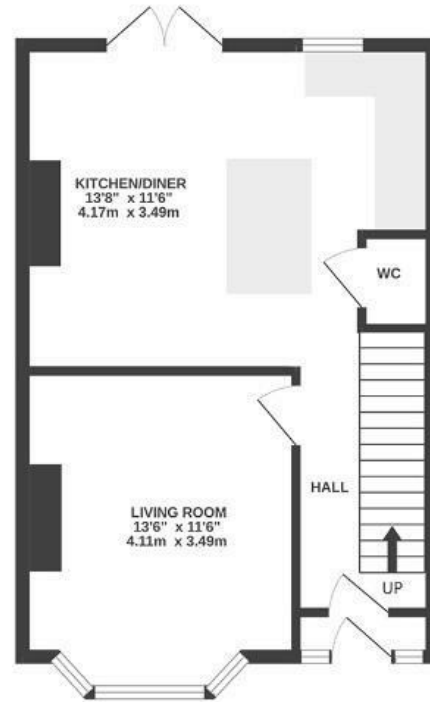
# Westleigh Park

## HENGROVE

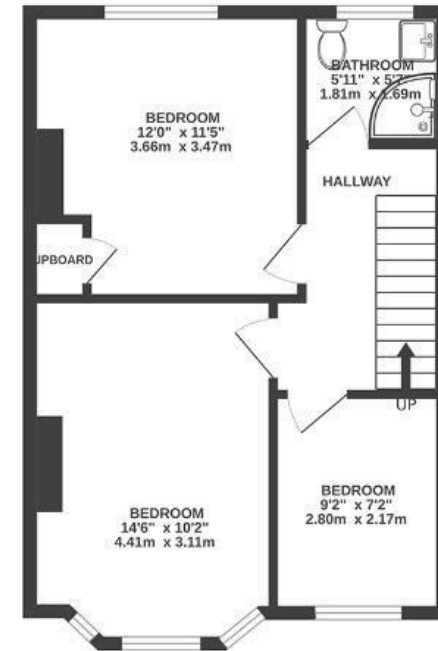
APPROXIMATE FLOOR AREA  
111 SQM / 1195 SQFT



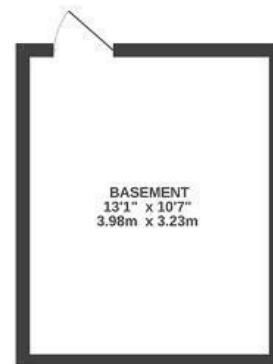
GROUND FLOOR



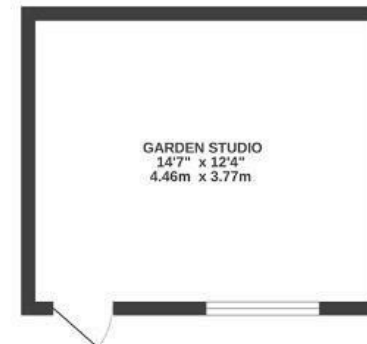
FIRST FLOOR



BASEMENT (EXT. ACCESSIBLE)



GARDEN STUDIO



Boardwalk

# Westleigh Park

HENGROVE, BRISTOL

£

£375,000

zzz

3 Bedrooms



BS14 9TJ



2 Bathrooms

*"I've loved living here! Having an amazing sound studio on site, with quiet, sunny spots just outside to take a break in during the day, made it a truly special place to live. The property catches the sun beautifully too, from the front garden in the morning through to the balcony late into summer evenings."*



image has been digitally staged

